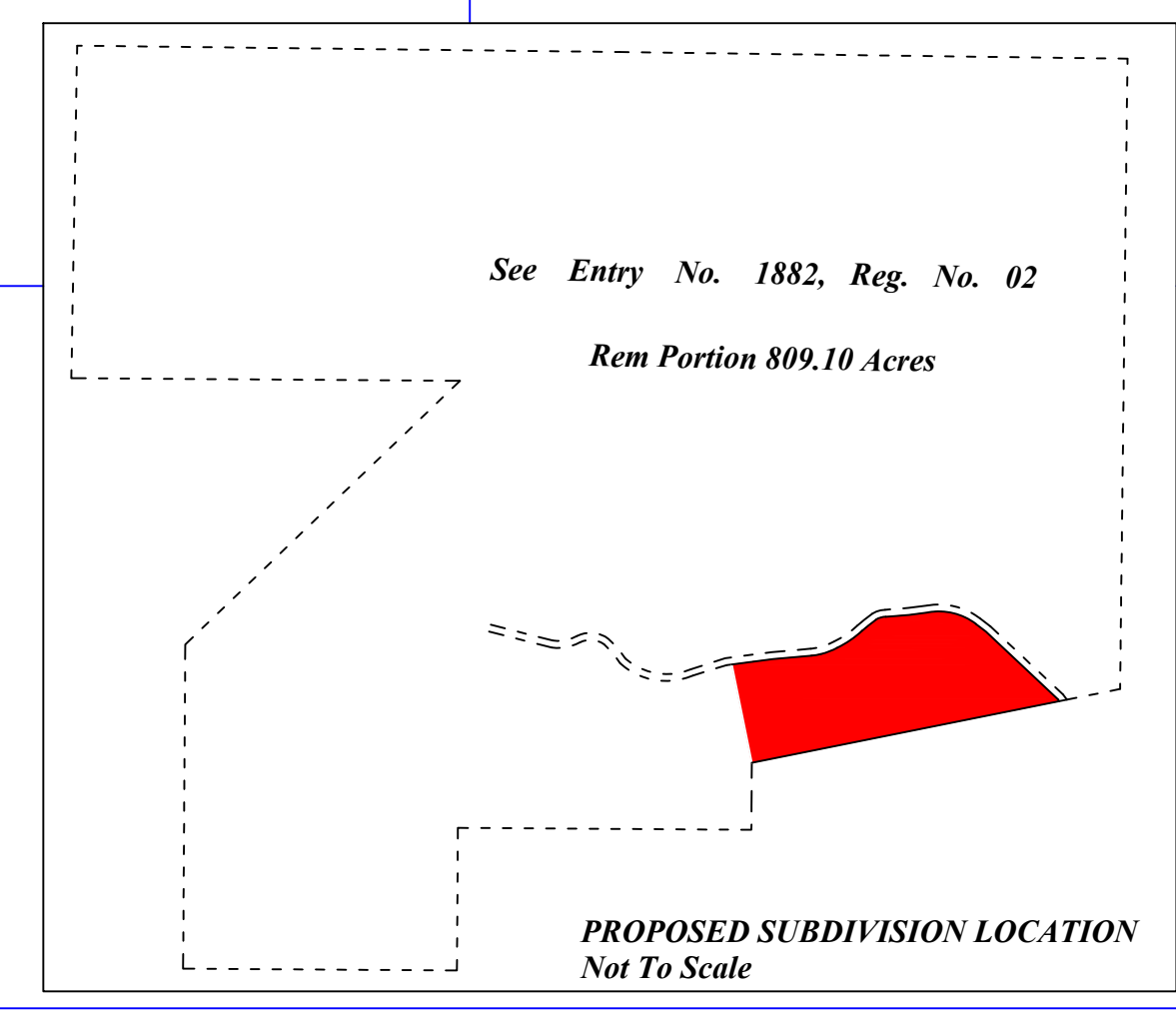
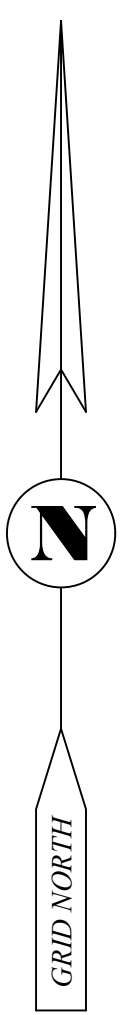
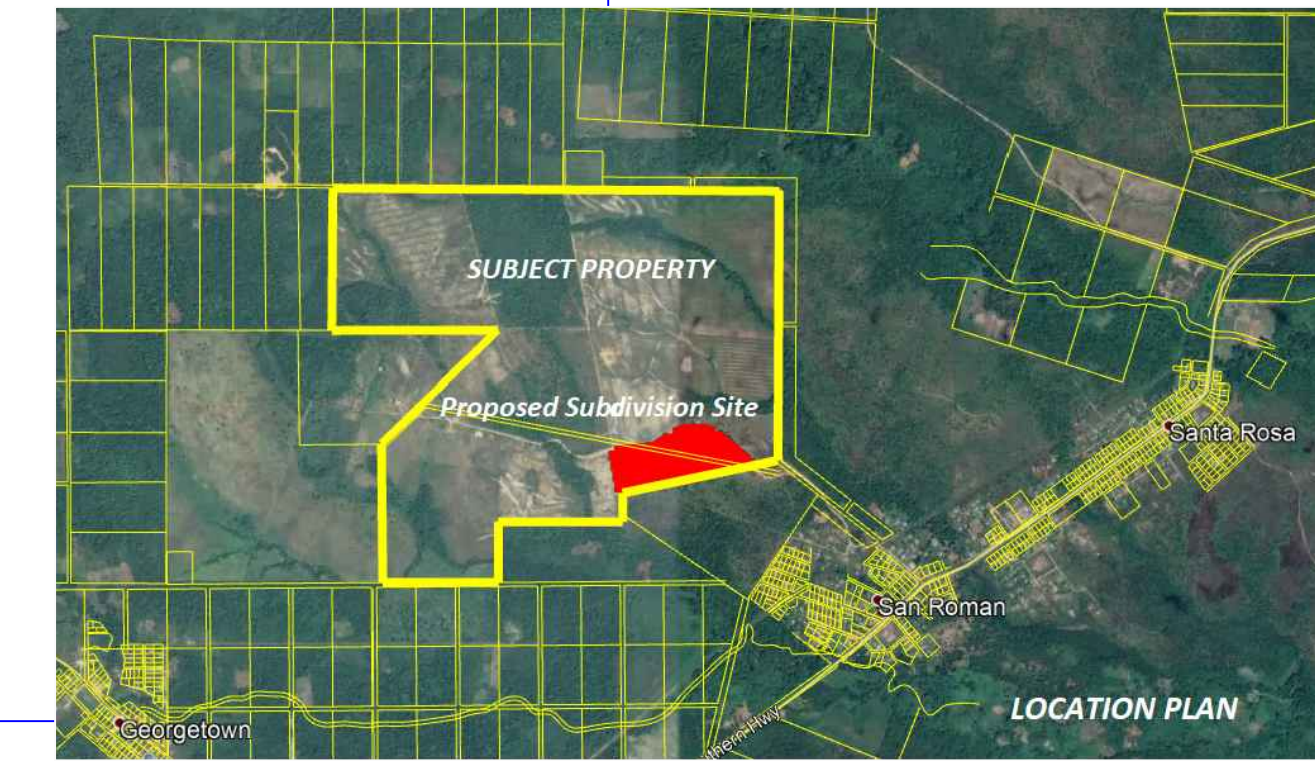
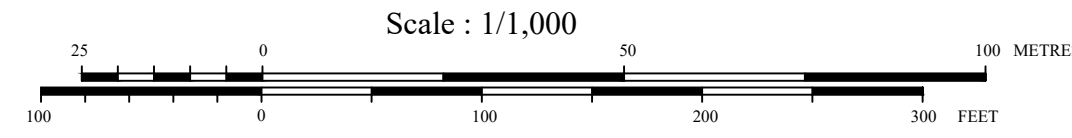


PLAN SHOWING PROPOSED SUBDIVISION OF 55 RESIDENTIAL LOTS, AND 1 OPEN SPACE BEING A PORTION OF A 842.338 ACRES PARCEL OF LAND, SITUATE AT LITTLE BILL HILL, SAN ROMAN VILLAGE AREA, STANN CREEK DISTRICT.

NOTE
 DISTANCES ARE IN METERS AND DECIMAL OF A METER
 AREAS ARE IN ACRES
 DAYLIGHT CUT RADIUS IS 6.096 METERS
 EXISTING ROAD AND PONDS DERIVED USING GOOGLE EARTH PRO APPLICATION



See Entry No. 1882, Reg. No. 02
 Rem. Portion 809.10 Acres

See Entry No. 1882, Reg. No. 02
 Rem. Portion 809.10 Acres

See Entry No. 1882, Reg. No. 02
 Rem. Portion 809.10 Acres

See Entry No. 8462, Reg. No. 07

See Entry No. 8462, Reg. No. 07

See Entry No. 8462, Reg. No. 07

See Entry No. 1882, Reg. No. 02
 Rem Portion 809.10 Acres

PROPOSED SUBDIVISION LOCATION
 Not To Scale